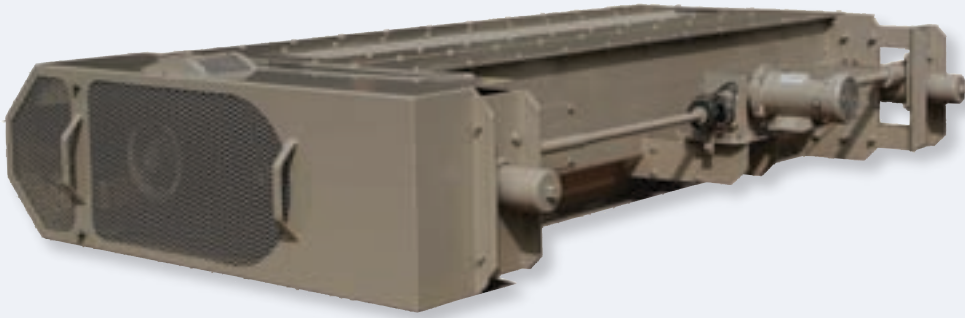


# High Capacity Pellet Crumbler



*Advancing Process Performance*



*Productivity*

*Capacity*

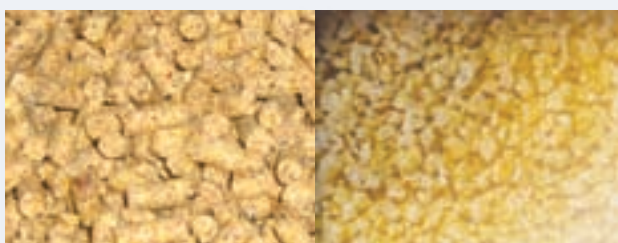
*Efficiency*

High capacity  
throughput in a  
compact design.

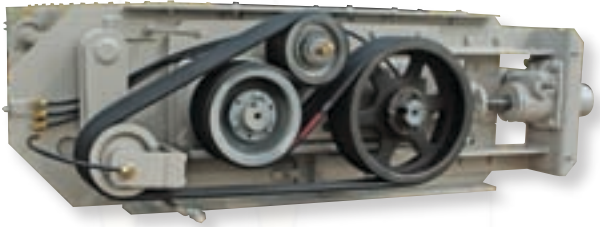
When productivity and efficiency matter, you need equipment that won't slow you down. Reducing bottlenecks in the system is key, which is why Camar Mill Systems Ltd. has introduced a new design for pellet crumbling.

The new Camar 16 x 84 crumbler has a higher capacity than two 12 x 72 crumblers and is rated at 60 tonnes/hr fine crumbles and 90 tonnes/hr coarse crumbles.

Even though capacity is high, installation space is compact, with a height of only 20 1/4" and an overall length of only 115" including the drive guards.

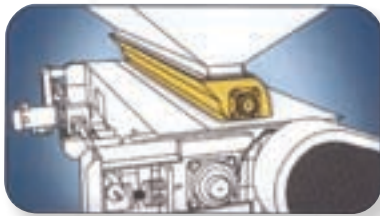


[www.camar.ca](http://www.camar.ca)



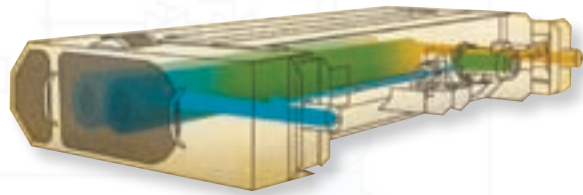
### **Positive Belt Tension System:**

Another industry first is Camar's positive belt tension system. The tension on the heavy duty serpentine belt configuration stays constant through the full roll positioning travel range, providing a constant transfer of power to both rolls.



### **Optional Roll Feeder:**

The roll feeder provides controlled feeding which allows the crumbler to perform more efficiently, maximizing capacity. The roll feeder is also ideal for improving capacity where current full capacity has been reached because of uneven feeding.



### **Positive Electric Positioning Drive:**

Being able to control the roll's position accurately is a result of the positive electric drive between the roll and the motor. The direct connection and electric drive ensures the mechanical movements are consistent and precise for final position setting.

### **Electric Roll Positioning**

Keeping quality under control is easy with Camar's standard remote interface for crumble sizing.

The LCD display shows the exact position of the roll which is easily adjusted by using the jog buttons. For further integration, Camar also offers automatic operation with setpoint entry and PLC interface.



### **More Features**

- Heavy duty construction to withstand constant operation
- Hard, chilled spincast rolls ensure long life
- Right or left hand drive configurations
- Rolls are supported with preloaded springs, ready to pass through tramp material, minimizing damage
- Easy maintenance, inspection with four access doors
- Lubrication points do not require moving any guards
- Access doors for feeler gauge for precise roll setup
- Easily and precisely adjustable mechanical stops for setup



*Gentle roll corrugations which produce a minimum of fines*

### **Specifications**

Model	Capacity* Single Stand (fine crumbles)	Capacity* Single Stand (coarse crumbles)	Drive	Installation Height
12 x 60	10 Tonne/Hr	18 Tonne/Hr	20 HP	18 1/2
12 x 72	12 Tonne/Hr	22 Tonne/Hr	25 HP	18 1/2
16 x 84	60 Tonne/Hr	90 Tonne/Hr	40 HP	20 1/4

1600 King Street North, P.O. Box 419  
St. Jacobs Ontario Canada N0B 2N0  
Tel. 519-664-3709 Fax. 519-664-3700  
[www.camar.ca](http://www.camar.ca)



*Advancing Process Performance*